

TWIN[®]

OUR TRIBUTE TO ART

ÉDOUARD MANET (1832 - 1883 Paris)

“If only I had a most ingenious machine, able to reproduce in such a way that the copy can no longer be told apart from the original. Not only would I be well-off, but also at last rid of the concern how to make my works accessible to the general public.”

Particularly those museums with an extensive collection of graphic masterpieces have an increasing demand for highest-quality reproductions. The reasons are the sensitivity of the original artwork, its immobility and the exorbitant costs of insurance.

TWINS are unique reproductions that are only produced in cooperation with leading museums.



TWINS are preferably only available in original dimensions.

TWINS are continuously compared with the original masterpiece until hardly any difference to the original is visible. After a complex production process, the TWIN is finally released by the museum.

Each TWIN comes with a certificate attesting its authenticity.

What are these reproductions needed for:

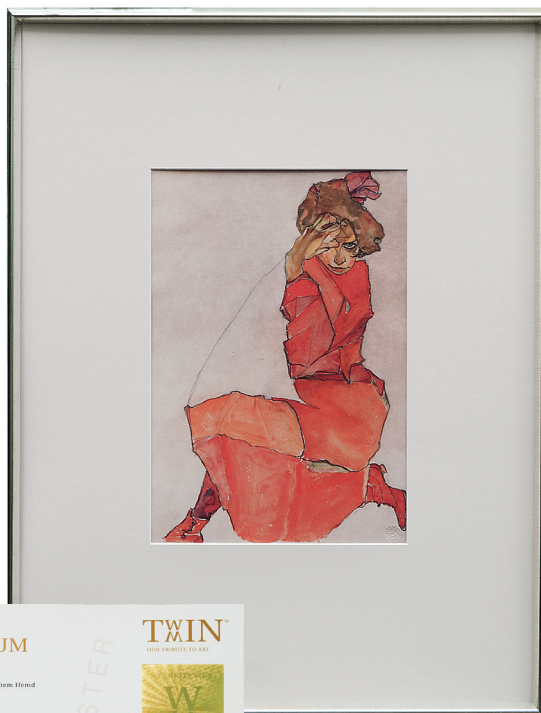
- for the preservation of highly sensitive original artwork for many future generations, particularly important in case of extremely lightsensitive graphics exhibited in permanent exhibitions
- Completion of current exhibitions, if the original artwork is currently unavailable
- exhibitions with educational purposes, in places where originals could never be exhibited, nationally and abroad. All this at low transport and insurance costs
- High-quality gifts for businesses or at political events
- collectors items for lovers of museum art
- Exhibitions at Offices, Headquarters, Salons or Office Art for Rent

Graphics:

All graphics are individually reviewed and authorized (for distribution) by the Leopold Museum Vienna.

TWIN graphics are delivered with an original Hoffmann frame in antique silver, passé-partout and glass covering, (in order that you can enjoy your TWIN at home as you were on site in the museum).

All graphics are only available in *limited edition* (the worldwide limitation being 499 copies) and each graphic comes with its individual certificate issued by the Leopold Museum.



Oil Painting Reproductions:

The focus of our (range of paintings) portfolio/ sortiment is the „Vienna 1900“ era with all mayor works by Egon Schiele, Gustav Klimt, Max Kurzweil, Kolo Moser, and many other artists of the “Secession group”.

Each TWIN is a quality reproduction on canvas made from the finest cotton. With a new developed method the oil paintings can be reproduced in a quality almost matching the original artwork. The digital high resolution technology, on the one hand, makes it possible to reproduce in almost any requested size. The data quality on the other hand allowing that color and contrast can be matched identically to the original artwork. Only light-resistant materials are used which guarantee a long-time color stability if treated carefully.

Contact:

TWIN fine art GmbH

A-1190 Wien, Neustift am Walde 91

Tel: +43 (676) 70 88 900 oder +43 (1) 440 24 93

Fax: +43 (1) 440 24 73

eMail: info@twin.cc

Homepage: www.twin.cc